

DRAWING NUMBER  
**37-200**

DRAWING NUMBER

DRAWING NUMBER

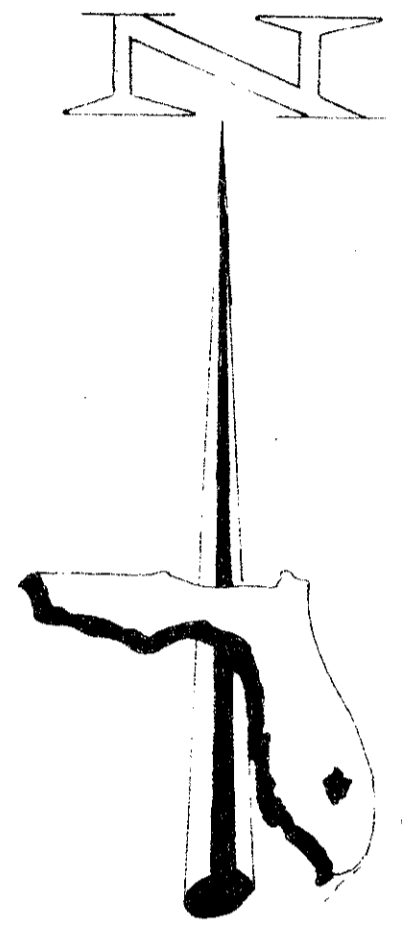
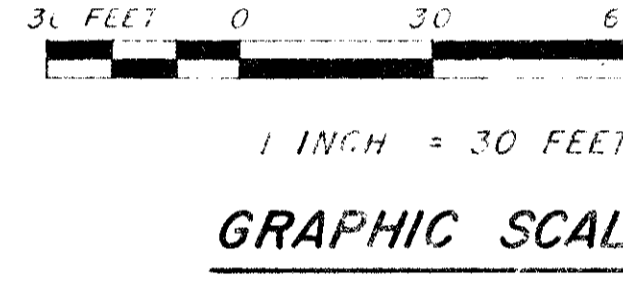
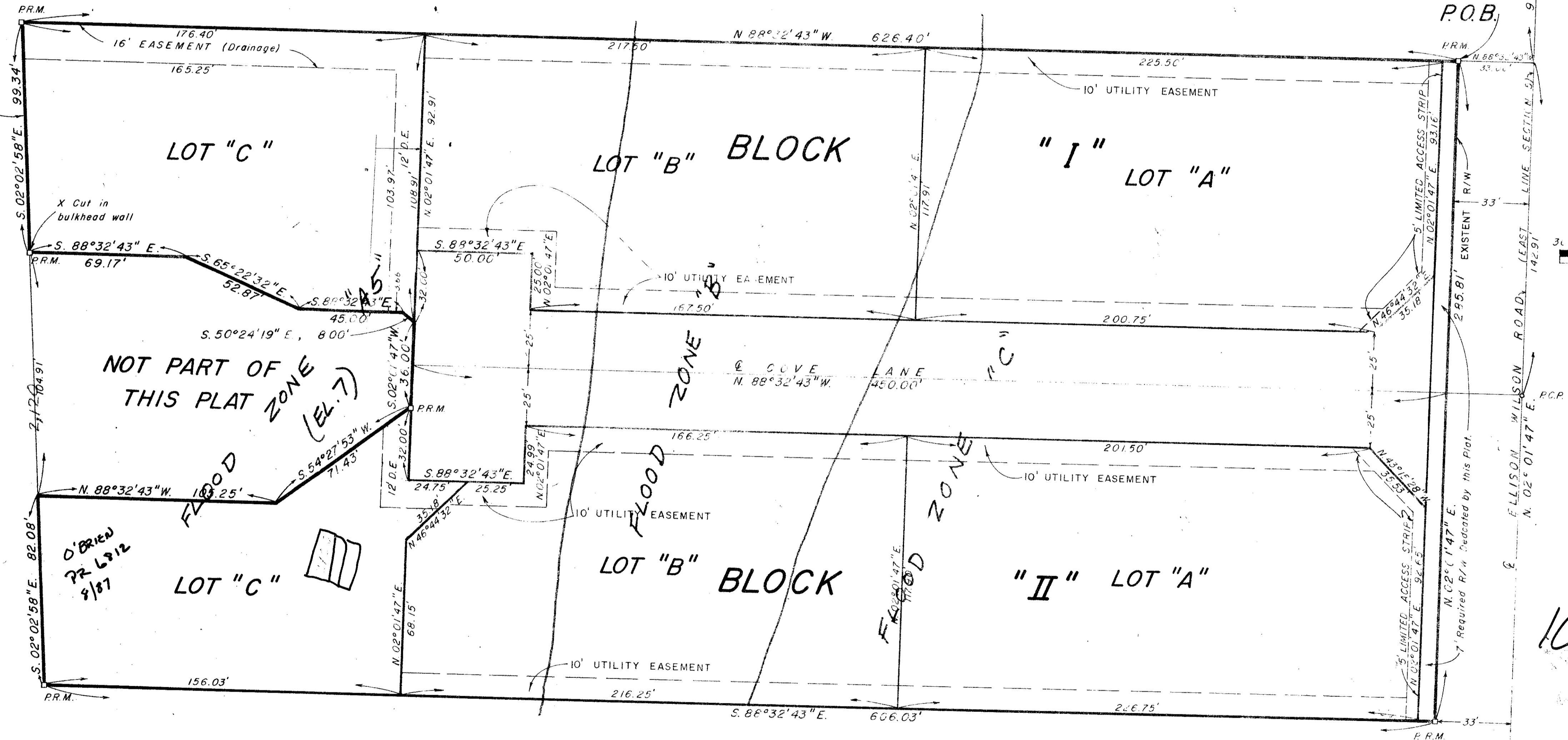
DRAWING NUMBER

# PLAT OF JUNO COVE

IN SECTION 5, TOWNSHIP 42 SOUTH, RANGE 43 EAST  
PALM BEACH COUNTY, FLORIDA  
FEBRUARY 1979

UNRECORDED A.M. 42

INTRACOASTAL WATERWAY  
EAST R/W LINE OF THE FLORIDA  
NAVIGATIONAL DISTRICT CANAL.



**BEARING DATUM**

ALL BEARINGS SHOWN HEREON ARE RELATED TO AN ASSUMED BEARING OF S 02° 01' 47" W ALONG THE EAST LINE OF THE NORTH HALF OF THE N.E. 1/4 OF SECTION 5, TOWNSHIP 42 SOUTH, RANGE 43 EAST.

**NOTES**

- NO BUILDINGS OR ANY KIND OF CONSTRUCTION OR TREES SHALL BE PLACED WITHIN EASEMENTS.
- DRAINAGE EASEMENTS TAKE PRECEDENCE OVER UTILITY EASEMENTS.

**LEGEND**

- P.C.P. INDICATES PERMANENT CONTROL POINT.
- P.R.M. INDICATES PERMANENT REFERENCE MONUMENT.
- P.O.C. INDICATES POINT OF COMMENCEMENT.
- P.O.B. INDICATES POINT OF BEGINNING.
- D.E. INDICATES DRAINAGE EASEMENT.

*Turnout*

**5/42/43**

1000-077

13

37/200  
SHEET NO. 2

FLORIDA SURVEYING & MAPPING  
REGISTERED LAND SURVEYOR  
WEST PALM BEACH, FLORIDA

DATE	2/15/79
BY	J.F. H.S.
FILE NO.	2368 K

PLAT OF JUNO COVE

# PLAT OF JUNO COVE

THIS INSTRUMENT WAS PREPARED BY RAFAEL SALADRIGAS IN THE OFFICES OF FLORIDA SURVEYING & MAPPING, INC., 941 NORTH MILITARY TRAIL, WEST PALM BEACH, FLORIDA, 33401. PHONE - 689-5414